

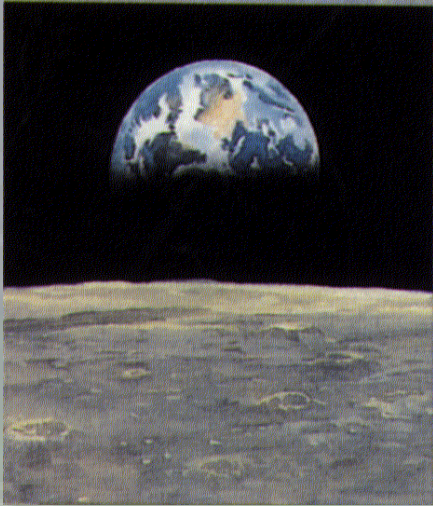


豐 映 科 技 股 份 有 限 公 司

RESI Corporation / Atlas Energy Systems Ltd.

以創新領先的技術 提供顧客滿意的服務

Innovation & Perfection



豐映科技股份有限公司 (RESI) 以卓越的環保及化學工程科技提供給工業界及政府客戶全方位的服務。

RESI以專業的工程科技人才及溶劑資源回收技術，提供客戶高品質、耐久且經濟的環境工程及資源回收工程服務，同時提供技藝超群的環保科技產品。

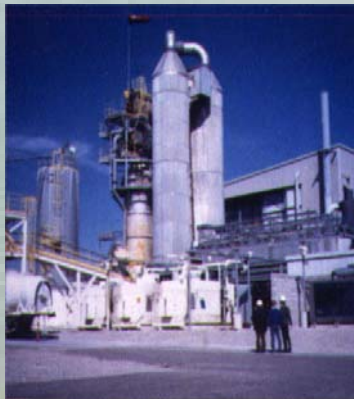
RESI的專業人才與優異的設計技術，將秉持著『持續開發創新的技術、提供顧客滿意的服務』的企業願景，提供您整合性的廢水、廢溶劑、廢棄物、廢氣、有害化學品處理及能源工程的整合性工程服務與資源回收服務。我們不僅提供成功的工程服務，更能提供嶄新的設計觀念，化腐朽為神奇....。

RESI Corporation is dedicated exclusively to providing a full range of safe, lasting environmental and engineering solutions.

Every day, we provide the best solution to the needs of industrial and governmental clients. With multidisciplinary staff, we deliver high quality, timely and cost effective environmental engineering and resources recovery services as well as engineered products.

RESI professionals and systems provide integrated, turnkey management and resources recovery of wastewater, air pollution, waste solvent, solid waste and hazardous chemicals from concept to successful completion.

INNOVATION AND PERFECTION are our vision and philosophy. Looking toward future, RESI will press on with this philosophy and concentrate on developing innovative technologies and providing a perfect, total service to our clients.



計畫管理與契約服務

PROJECT MANAGEMENT AND CONTRACT SERVICES

ON SCHEDULE... WITHIN BUDGET...

RESI以全面性的電腦作業系統及電腦輔助計畫管理技術，向客戶提出最優秀的計畫管理與工程服務保證。RESI重視客戶的權益，每一項計畫不分大小，都利用電腦系統做最詳盡的規劃、嚴格的成本與進度管制、確實的技術執行監督。

電腦輔助計畫管理

RESI採用最先進的電腦輔助計畫管理系統，能協助計畫經理有效分配工作預算及資源、建立各種管理工具、隨時更新計畫管理資訊。使有經驗的計畫經理能隨時獲得即時資訊，不管大小計畫均能作最有效率的管理。

嚴謹的計畫管理訓練

RESI每一位計畫經理都須接受嚴謹的計畫管理訓練。利用電腦輔助系統的實際演練、資深計畫管理人員的教授及各種計畫的在職管理訓練，RESI每一位計畫經理都能提供客戶一致的高超計畫管理品質。

品保與品管策略

RESI以標準作業程序規範工程承包商的篩選、評估與議價作業。RESI的工程承包商都肯定具有良好的工程實績、技術能力與成本控制能力，並且必備完整的品保/品管與工業安全管理系統，因此，必能確保計畫之成功。



RESI's performance reflects our commitment to excellence in project management and contract services. Detailed planning, cost and schedule control, and technical execution form a powerful management instrument at work for every RESI client.

Computerized Project Management

Sophisticated software packages supply project managers with extensive, continually updated information to maximize cost-effectiveness. Using state-of-the-art management systems, budget and resource allocation is determined for every job. These planning systems produce critical path schedules for projects of all sizes. With a job tracking system, management forecasts and monitors project costs. Experienced managers equipped with these computer capabilities handle projects ranging from small to large, from routine to complex.

Project Management Training

Intensive basic and advanced project management training combines practical experience with classroom instruction and simulation using our computer systems. Additionally, outside classroom instruction, on-the-job training and progressive responsibility on increasingly complex projects prepare RESI associates for project management roles. Once the professional becomes a member of senior project management staff, periodic seminars maintain those skills.

Subcontractor Management Program

Standard RESI procedures govern the entire process of screening, qualifying, evaluating and selecting every subcontractor. To become qualified to bid on RESI projects, firm must demonstrate impressive technical performance and cost-control measures as well as comprehensive programs for quality assurance/quality control (QA/QC) and health and safety.



工程服務 ENGINEERING



RESI的專業工程師創造各種高附加價值的工程技術與解決方案，建立RESI領先的工程實力：

- 生物能源科技整合工程服務
- 化工製程與設備
- 電漿熔融製程與設備
- 電漿氣化製程與設備
- 粉體輸送及定量給料製程與設備
- 工業廢水評估與設計
- 化學品處理技術
- 有害廢棄物處理設施
- 空氣污染防治工程
- 資源回收設施
- 熱處理設施、焚化爐



桃園縣復興鄉小型一般廢棄物焚化廠興建工程



采利環工股份有限公司設計

RESI professionals consistently produce a board scope of value-added engineered solutions. They have established RESI as an innovative engineering leader offering:

- Air Pollution Control Engineering
- Biofuel Technologies and Turkey Service
- Chemical Processes and Equipment
- Chemical Treatment Capabilities
- Hazardous Waste Treatment Facility
- Industrial Waste Water
- Mixed waste Management Engineering
- New Facility Design
- Plasma Melting Facility
- Plasma Gasification Facility
- Powder Technology and material Packaging
- Resources Recovery Facility
- Thermal Treatment Engineering

支援系統

SUPPORT SYSTEMS



RESI專業化的支援系統，使企業體的每一種服務、每一種產品，都能確保一致的優良品質。

品質保證／品質管制

專業工安衛品管專家，協助RESI每一員工建立完整的QA/QC系統。包括完整的文件與記錄管理、樣品及分析管制聯單、複審及技術驗證。

安全與健康管理

由計畫規劃到現場訓練，RESI堅持徹底執行人員安全與健康管理。除了勞工安全衛生法規相關規定外，員工與下包商的醫療記錄監督亦列為此項管理的重點之一。



電腦支援能力

RESI自行研發的電腦輔助設計系統已成為工程人員最有價值的系統發展、模擬分析及設備設計工具。利用電腦輔助設計系統，RESI的工程師們可充分節省時間及費用，並進而投入開創性的研發領域。此外，採用電腦化製圖系統，亦充分加速作業時程。選擇RESI的支援，您將可得到一群專家的協助，為您解決各種環保疑難雜症。

Affecting every service we perform and each product we offer, RESI's corporate-wide support systems are integrated throughout our business.

Quality Assurance/Quality Control

A special staff is dedicated exclusively to engaging all associates in RESI's QA/QC program. The program features documentation and record management, sample and analytical chain of custody, peer-review and technical validation.

Health and Safety

A corporate-wide health and safety program is active during tasks from project-specific planning to on-site training, awareness and monitoring. Employee and subcontractor medical monitoring is a vital part of the program in addition to adherence to all Occupational Safety and Health Administration (OSHA) requirements.

Computer Capabilities

RESI-developed computer aided design systems prove an invaluable tool for the development, simulation and design of new facility. The system speeds data management and facility design, reducing costs and freeing engineers and scientists to dedicate more time to the development of creative solutions. Additional computer capabilities allow further data processing and analysis. Computer-aided drafting serves to accelerate the environmental problem-solving process. When you choose RESI support, you access a team of experts who solve a wide range of environmental problems-simple or complex, from start to successful finish.

豐映科技股份有限公司

RESI Corporation / Atlas Energy Systems Ltd..

地址：台中市文心路一段 218 號 21 樓
電話：(04) 2472-6600； 傳真：(04) 2475-5872
21F, #218, Sec. 1, Wen-Xin Road, Tai-Chung City, Taiwan, R. O. C.
TEL: +886-4-2472-6600 FAX: +886-4-2475-5872
E-Mail: service@resi.com.tw <http://www.resi.com.tw>